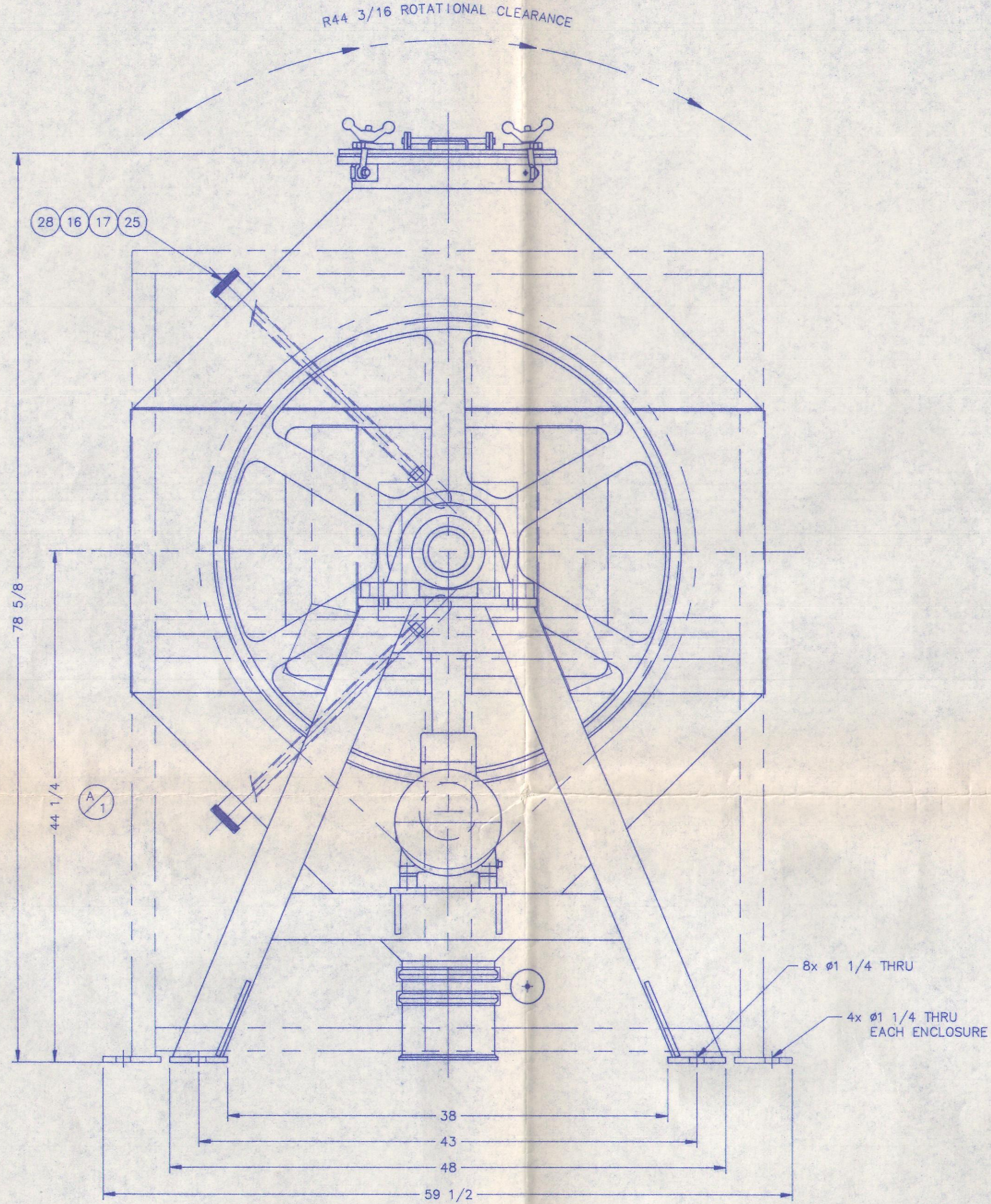
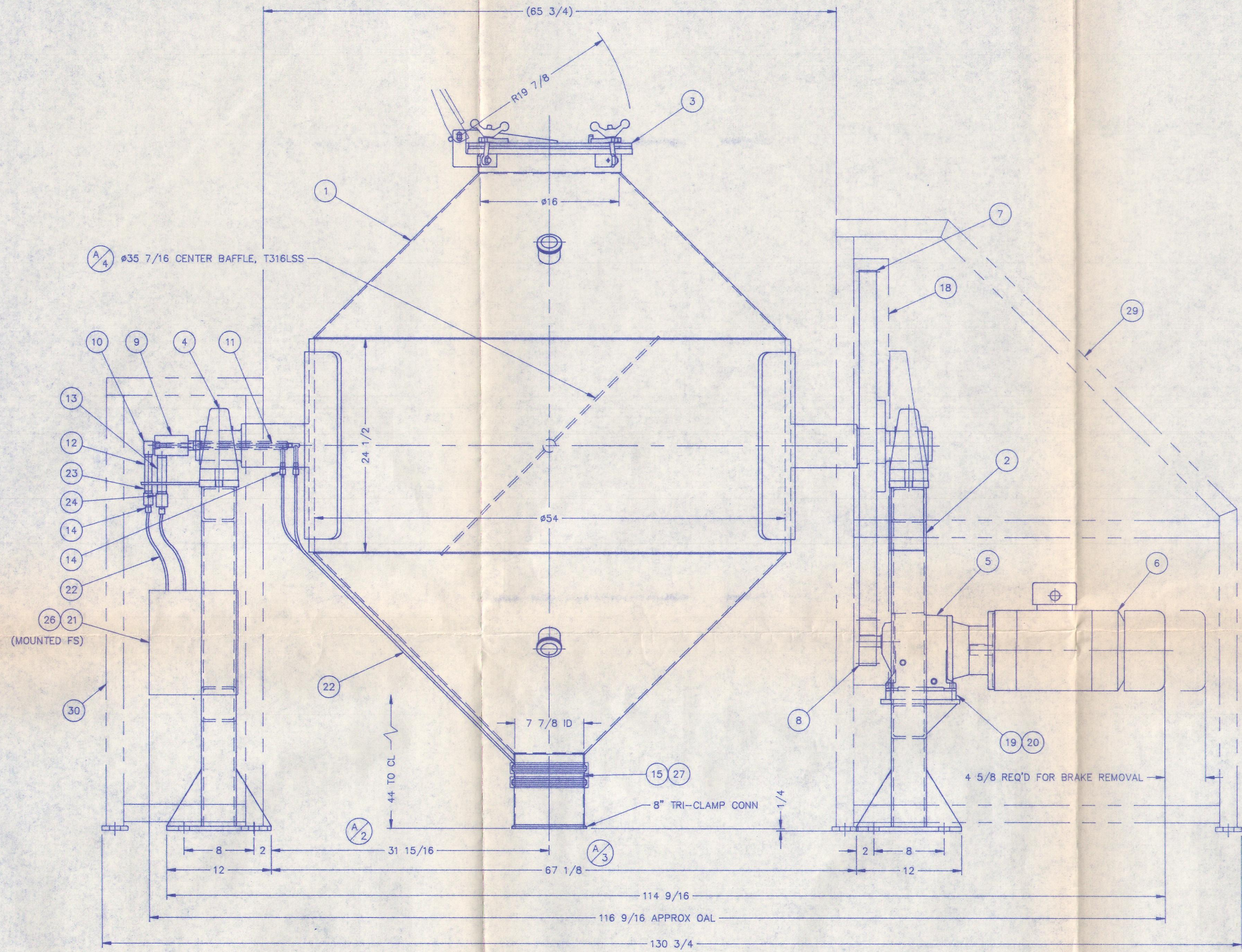


No.	LTR	REVISION/DESCRIPTION	DATE	CHECKED BY
1	A	CHANGED: 44 1/4 WAS 46 15/16 30 15/16 WAS 27 7/8 87 1/8 WAS 58 1/4 35 7/16 WAS 33 1/2 WAS APPROVAL DRAWING ADDED: 8" TRI-CLAMP FERRULE TO DISCHARGE	06/MAY/87	TR
2	B	CHANGED: AS BUILT	07/OCT/87	TR



ITEM NO	PART NUMBER	WEIGHT lbs. ea.	DESCRIPTION	VEN/MAN	QTY
16	13MHM-2 1/2		CLAMP, 2 1/2", T304SS	TRI-CLOVER	2
15	BV-02-FN-RT-P-8		VALVE, BUTTERFLY, 8", T316LSS BODY, DMS, EPDM SEAT, W/PNEUMATIC ACTUATOR	METO	1
14	31155614		FITTING, MALE STUD, 1/4 TUBE TO 1/4 MNPT	LEGRIS	4
13		0.5	PIPE, 3/4 SCH40 x 5 1/2 LG, T304SS	P.O.A.	1
12		0.4	PIPE, 1/2 SCH40 x 5 1/2 LG, T304SS	P.O.A.	1
11	GD000179-11	0.6	PIPE, SYPHON, 1/4 SCH40 x 15 5/8 LG, BRASS	P.O.A.	1
10	451243		ELBOW, 3/4 NPT, TYPE RS, MODEL #5209-20	DUFF NORTON	1
9	750089		ROTARY UNION, 3/4 NPT, TYPE RS, R.H. THD, MODEL #R5300P	DUFF NORTON	1
8		13	GEAR, PINION, 20T, 4DP, 20" PA, 2 FACE, 1 1/4 BORE W/KWY, CS	P.O.A.	1
7		300	GEAR, 160T, 4DP, 20" PA, 2 FACE, 4 BORE W/KWY & SS, CI	P.O.A.	1
6			BRAKEMOTOR, 5 HP, 3/60/230/460V, WASHDOWN, INVERTER DUTY, 184TC FR, 1800 RPM	RELANCE	1
5	M85012	73	REDUCER, SIZE 3, 188 RPM OUT, 9.30:1 RATIO, 180TC INPUT, "E-Z KLEEN"	DODGE	1
4	MP-55-CCR	47.8	BEARING, PILLOW BLOCK, CORROSION RESISTANT, 3 7/16 BORE	SEALMASTER	2
3	CC000187	77	COVER, 16", HINGED, T316LSS/T304SS	P.O.A.	1
2	TC000223	372	STANDS, DRIVE AND IDLER, T304SS	P.O.A.	1
1	BD000124	1423	BODY, T316LSS/T304SS	P.O.A.	1

BILL OF MATERIALS

ITEM NO	PART NUMBER	WEIGHT lbs. ea.	DESCRIPTION	VEN/MAN	QTY
33	91845A033	0.02	NUT, HEX, 1/2-13UNC, 18-8SS	McMASTER	22
32	92141A033	0.01	WASHER, FLAT, 1/2" BOLT SIZE, 18-8SS	McMASTER	22
31	91247A712	0.06	SCREW, HEX HEAD CAP, 1/2-13UNC x 1 LG, 18-8SS	McMASTER	22
30	UD000040	314	ENCLOSURE, IDLER END, T304SS	P.O.A.	1
29	UD000039	530	ENCLOSURE, DRIVE END, T304SS	P.O.A.	1
28	16AMO-2 1/2	0.5	CAP, 2 1/2", T316LSS	TRI-CLOVER	2
27	31155611		FITTING, MALE STUD, 1/4 TUBE TO 1/8 MNPT	LEGRIS	2
26	ED000076		CONTROL PANEL, SEE NOTE 1	DODGE NEWARK	1
25	IB000009		SPRAY BALL LANCE ASSEMBLY, T316SS	P.O.A.	2
24	4452K813	0.3	PIPE, COUPLING, REDUCER, 150#, 3/4 x 1/4 NPT, T316SS	McMASTER/CARR	1
23	4452K812	0.2	PIPE, COUPLING, REDUCER, 150#, 1/2 x 1/4 NPT, T316SS	McMASTER/CARR	1
22	01405600		TUBE, 1/4 OD, CLEAR NYLON	LEGRIS	A/R
21	ED000076		JUNCTION BOX, NEMA 4X, 2-WAY SOLENOID VALVE, F/R, 1/60/120V	DODGE NEWARK	1
20	DA000112	3	SPACER, REDUCER, T304SS	P.O.A.	2
19	GC000243-28		SHIM, REDUCER, T304SS	DERICKS	A/R
18	GD000179-18	76.6	GUARD, GEAR, W/BRACKETS, T304SS	DERICKS	1
17	40MP-E-2 1/2		GASKET, TYPE 1, 2 1/2", FDA EPDM	TRI-CLOVER	2

BILL OF MATERIALS

A46665

NOTES:

- ITEM 26 - NEMA 4X, START/STOP/JOG/E-STOP PUSHBUTTONS  
SPEED CONTROL, A/C INVERTER, PROGRAMMABLE DIGITAL TIMER  
VALVE OPEN/CLOSE SELECTOR SWITCH, 3/60/460V, 30 x 24 x 8  
(SHIPPED LOOSE, NOT SHOWN, TO BE MOUNTED BY CUSTOMER)

TECHNICAL SPECIFICATIONS AND NOTES					
MODEL No.: ROB-54 SERIAL No.: A46665 MACHINE WEIGHT (EMPTY): 3000 lbs APPROX VESSEL VOLUME: 53 cu ft TOTAL OPERATING CAP: 35 cu ft MAX MATERIAL: VESSEL - T316LSS/T304SS FINISH: PRODUCT CONTACT - 150 GRIT, 25 Ra MICROINCH FINISH SPEED OF ROTATION: 6.2 - 24.6 RPM ELECTRICAL REQUIREMENTS: 460V/3PH/60Hz (CONTROL PANEL) 120V/1PH/60Hz (JUNCTION BOX) INTERCONNECTING WIRING SUPPLIED BY CUSTOMER GEAR BACKLASH SET AT: 0.025 - 0.030					
PAUL O. ABBÉ INC.					
LITTLE FALLS, NEW JERSEY, U.S.A. PHONE: (201) 256-4242 FAX: (201) 256-0041					
CUSTOMER: FLOUR DANIEL					
GENERAL ARRANGEMENT 5 HP COMPACT DRIVE, WASHDOWN 54" ROTA-CONE BLENDER					
TR	---	16/APR/97	1/8" = 1"	A46665	
DRAWN BY	CHECKED BY	DATE	SCALE	SHOP ORDER	
OWG					
No.	GD000179		B	1 OF 1	
			REV LTR	SHEET No.	